

*Instructions  
for Operating the*  
**BABY BROWNIE**

**To Load the Camera**

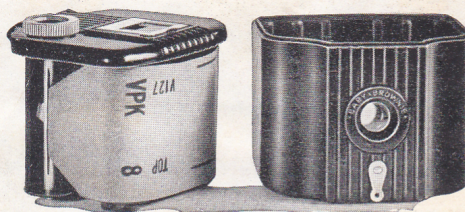
**K**EEP the protective paper wound tightly around the film to prevent light striking it. The camera should be loaded or unloaded in subdued light.

Use Kodak Film number: **V 127** or **127** for the Baby Brownie.

Turn catch at bottom of camera to "OPEN." Lift the top to remove the roll holder.

Place the film in the end opposite the winding knob; it must be placed so that when the paper is unwound, the colored side is up.

Remove the band holding the end of the paper; then draw the paper across the opening and thread it into the longer slit in the reel,



*as far as it will go.* Turn the winding knob a few times to bind the paper on the reel, and be sure that the paper is started straight.

Replace the roll holder in the outside box and turn the catch on the bottom of the camera to "CLOSE."

Turn the winding knob. A warning hand will appear in the red window; then turn slowly until the figure 1 is in position in the center of the window.

After each exposure be sure to wind the next number into position.

**Making the Exposures**

The Baby Brownie is a fixed-focus camera and everything about five feet and beyond will be photographed sharply.

The shutter of the camera is released by pushing the exposure lever located under the lens. Push the lever *slowly, as far as it will go*; then release the lever, which will return to its original position. A "click" will be heard when the exposure is made and another when the exposure lever returns to its original position. If no "click" is heard no exposure is made.

Be sure, when making the exposure, that *no part of the hand comes in front of the lens.*

Hold camera steady. Do not jerk the exposure lever; if camera is moved at the instant of exposure, the picture will be blurred.



The camera should be held level if it is desired to have the vertical lines of the subject parallel with the sides of the picture. Unusual effects can be obtained by tilting the camera.

If the subject is a child or a pet, hold the camera level with the center of the subject.

For the best results with the Baby Brownie, outdoor exposures should be made with the subjects in bright sunlight, and during the hours from 2½ hours after sunrise until 2½ hours before sunset. The sun should be behind your back or over the shoulder. Satisfactory snapshots can often be made when the subjects are in the open shade with clear sky overhead, and even on slightly cloudy days when the light is bright.

**The Finder**

The finder is brought into position by lifting the front frame. The front frame must be

parallel with the sight. Hold the camera with the sight or rear frame as close to the eye as possible with the camera held against the face, and frame the picture within the front frame of the finder. All vertical lines of the subject should be kept parallel with the vertical sides of the front frame, when holding the camera either in the vertical or horizontal position.

**Kodak Portrait Attachment**

The Kodak Portrait Attachment makes large head and shoulder portraits. It can also be used for flowers and similar subjects.

Place the Attachment over the lens mount and compose the picture in the finder. *The subject must be about 3½ feet from the lens.*

Use Kodak Portrait Attachment No. 3 with the Baby Brownie.

The Kodak Diffusion Portrait Attachment is a supplementary lens used in the same manner as the regular Kodak Portrait At-

tachment. By using this Attachment, portraits are made more artistic, due to the softening effect of diffusion.

Use Kodak Diffusion Portrait Attachment No. 3 with the Baby Brownie.

**Removing the Film**

After all the exposures have been made, turn the winding knob until the end of the protective paper passes the window.

In a subdued light remove the roll holder. Hold the end of the protective paper against the roll of film to prevent the paper from loosening.

Remove the roll of film. Fold under about half-an-inch of the paper, and fasten it with the sticker.

After removing the film from the camera do not wind it tightly with a twisting motion or the film might be scratched.

**Important:** Film should be developed as soon as possible after exposure.

Remove the empty spool and place it in the winding side of the camera, *first engaging the slot in the end of the spool with the web of the winding key.*

Wipe the inside of the camera and roll holder, occasionally, with a slightly damp cloth. The front of the lens should be kept clean, wiping it with a clean handkerchief.

To make it easy to carry the Baby Brownie, a suede-finish carrying case with hand strap is available, price 25 cents.

For further information in regard to picture making consult our Service Department. *We are at your service; write to us—there is no charge, no obligation.*

EASTMAN KODAK COMPANY,  
ROCHESTER, N. Y.